

N Northeastern **City and Community Engagement**

Summer 2022 Newsletter



Rising seniors in Boston and surrounding towns participate in the Young Scholars Program, a free six-week research program hosted by Northeastern's Center for STEM Education in July. Photo by Matthew MODOONO/Northeastern University

Summer in the city is flying by! We hope our neighbors and partners are staying cool and taking time to be with family and friends. Read on for the latest community engagement news from CCE and beyond!

Northeastern is Top Destination for BPS Valedictorians



Photos Courtesy of Boston Public Schools

CCE is proud and overjoyed to welcome 11 Boston Public Schools valedictorians to the Northeastern community this Fall. All 11 will be supported with full scholarships and institutional grants.

"It is so wonderful to know that many of our valedictorians have chosen to stay in Boston to attend Northeastern University. Our amazing valedictorians enrich all of our communities and are role models for other young people. The entire city is proud of them and we're excited to see what each of them accomplish as Northeastern Huskies and future leaders of Boston and beyond." - Mayor of Boston, Michelle Wu

Here are the 11 BPS valedictorians who have chosen to matriculate at Northeastern this coming semester:

- Ergina Agastra, Excel High School
- Khadiza Akter, Brighton High School
- Worknesh Bekele, Fenway High School
- Meredith Bultmeyer, Boston Collegiate Charter School
- Neima Andrade De Pina, Margarita Muñiz Academy
- Kerri Doyle, Mary Lyon Pilot High School
- Connor Lashley, Jeremiah E. Burke High School
- John Le, East Boston High School
- Brian Nguyen, Henderson K-12 Inclusion School
- Jenny Tran, Josiah Quincy Upper School
- Jahkiya Eliza Tinnis, Another Course to College

[Read more about our local incoming Huskies!](#)



Boston resident, Abdillahi (Mash) Abdirahman, practices on Carter Field prior to the start of the Boston Unity Cup, a city-wide adult soccer tournament celebrating Boston's diverse community around a shared passion for sport. Photo by Matthew Modoono/Northeastern University

Northeastern hosts Boston Unity Cup on Carter Field for first games since COVID hiatus

[Boston Unity Cup](#), a celebration of soccer that brings communities together, kicked off on Carter Field for the first time since the beginning of the pandemic. Twenty men's teams and eight women's teams competed in July, representing 21 countries from club teams across Boston.

"Boston Unity Cup is an ideal example of why the University continues to maintain the city-owned [Carter Playground](#) after making a significant investment into it a few years back. With Carter Playground being the first park in Boston to be named for an African-American, it makes perfect sense to celebrate the diversity and culture of the city, right in the heart of the city. This event truly impacts the local community, and we're honored to support Boston Unity Cup and all the great work it does for the kids and families in Roxbury and South End."

- Chimeh Idiokitas, Assistant Vice President for Community Relations, The Office of City and Community Engagement

[Read more about Boston Unity Cup on News@Northeastern](#)



Photos by Alyssa Stone/Northeastern University

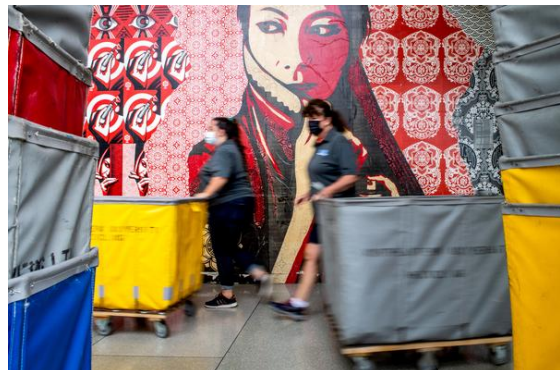
In June, we were proud to host the Madison Park Technical Vocational and O'Bryant High School graduations in Matthews Arena. Congrats once again to the Class of 2022!



Photos from Madison Park Technical High School Facebook page, Northeastern PD Twitter, and the John D. O'Bryant High School's Twitter.

Student move-in is just around the corner!

Fall move-in 2022 will take place Sunday, August 28th - Monday, September 5th. Neighbors, [please read Vice President of City and Community Engagement, John Tobin's letter](#) to our surrounding communities. Questions regarding dates and locations of parking restrictions, parking needs, or any other aspect of fall opening may be directed to our office at communityengagement@northeastern.edu.



Cradles to Crayons Collection


We are accepting donations of clothing, shoes, books, and more for Cradles to Crayons now through August 25th at Northeastern Crossing! A Welcome Week partner, Cradles to Crayons has requested we collect as many critical items as possible. Make sure to check the donation list before dropping off items. Anyone is welcome to donate!

Collection points also available at 144 Curry Student Center and 250 Dodge Hall.

If you don't have the requested items but would still like to contribute, check [Cradles to Crayons' Amazon wishlist](#).

Open Donation!

Cradles to Crayons



Bin Locations:

Curry Student Center
Room 144

Dodge Hall
Room 250

1175 Tremont St
Northeastern Crossing


Most Needed Items:

Clothing:

- ✓ Youth sizes 0-20
- ✓ Adult sizes small & medium
- ✓ Winter coats and jackets

Shoes:

- ✓ Infant/Child sizes 5-13
- ✓ Adult sizes 1-10



Accepted:

- ✓ Gently used clothing and coats (youth sizes 0-20 and adult sizes small & medium)
- ✓ Shoes, boots, sneakers, and sandals (infant/child sizes 5-13 and adult sizes 1-10)
- ✓ Unopened diapers and training pants
- ✓ New arts and crafts/school supplies
- ✓ Books, especially baby board books
- ✓ New socks and underwear
- ✓ New hygiene items
- ✓ New Pajamas

NOT Accepted:

- ✗ Used underwear or socks
- ✗ Stained or damaged clothing items
- ✗ Used arts and crafts/school supplies
- ✗ Bedding, knitted hats, mittens or gloves
- ✗ Used hygiene products, baby food, breast pumps and supplies, bottles, whitening toothpastes
- ✗ DVDs/CDs/VHS tapes/computer games/electronics
- ✗ Furniture and household goods/items including cribs
- ✗ Toys or baby gear of any kind (e.g., stuffed animals, play structures, strollers, car seats, bicycles, violent toys)
- ✗ Books and clothing with family-related messaging ("I Love Mommy," "Daddy and I") or religious or holiday messaging
- ✗ Bathing suits or costumes, sports equipment (e.g. rackets, mitts)

Community and faculty partnerships in the news!

Boston.com: "Northeastern researchers propose 'Emerald Tutu' to protect Boston from flooding"



"As climate change worsens and the risk of flooding becomes more apparent in Boston, researchers are hard at work on an innovative project that could protect the city. Dubbed the Emerald Tutu — a riff on Frederick Law Olmsted's iconic chain of green spaces known as the Emerald Necklace — the project is being developed by a team at Northeastern University. The idea is to place a network of environmentally-friendly circular mats of vegetation in the waters around Boston."

The Boston Herald: "The ARTery: Boston councilor, professor work to create arts corridor through Roxbury



Staff Photo By Matt Stone/MediaNews Group/Boston Herald

"City Councilor Tania Fernandes Anderson and professor Lily Song stared happily at yet another large brick wall on Dudley Street, probably the fourth or fifth of the day that's seized their attention.

'What a great canvas,' Fernandes Anderson said of the bland side wall gazing back at them. It's a thought process they're applying to a whole 3-mile stretch of roads in the heart of Boston, one that snakes from the to-be-designated 'Jazz Square' in the South End through Roxbury and to Grove Hall — a path they're calling 'the ARTery' that's meant to beautify long-disinvested-in stretches of heavily minority neighborhoods with an eye on improving life for locals and bringing in new business."

Read the Boston Herald article

**COMMUNITY FACES:
Spotlights of our CAB members**

feat.
**Nick Josey, Director at the Vincita
Institute**



Get to know our Community Advisory Board!

The Community Advisory Board (CAB) is an active and thoughtful group of dedicated community members tasked with advising the work of the Office of City and Community Engagement. The CAB discusses and provides input about community engagement, the impact of CCE's work on local neighborhoods, and the university's development ideas and initiatives.

Our latest CAB spotlight is **Nick Josey**, Northeastern alum and Executive Director of the

Vincita Institute! Nick shares about his organization, increasing financial literacy in Boston communities, and more.

[Click here for the full interview!](#)

CAMPUS SPOTLIGHTS

Scenes from Northeastern's Juneteenth Celebration 2022

Northeastern's Boston campus celebrates Juneteenth with a festival on Centennial Common on Friday, June 17, 2022. Black owned vendors, a food truck, as well as student and local performers participated in the event.

[Read more: "NORTHEASTERN COMMUNITY COMMEMORATES JUNETEENTH WITH REFLECTION AND FESTIVITIES"](#)



IntaAfrika African dancers pull members of the audience to dance with them at the Juneteenth festival in Centennial Common on Northeastern's Boston campus on Friday, June 17, 2022.





Photos by Alyssa Stone/Northeastern University



NYPD officer Brenda Zirpolo reads to children in Carter Playground during a story time with the university resource dogs Cooper and Sarge on Wednesday, August 3, 2022. Photo by Alyssa Stone/Northeastern University

Career Opportunity Highlights

Come work with us!

CCE is seeking a **Community Relations Coordinator** to join our team!

[View the job posting here.](#)

Other open opportunities at Northeastern:

[Assistant Director of Community Service](#)

[Program Manager: Public Urban Informatics Education](#)

[More career opportunities at Northeastern](#)

Fall Volunteer Fair 2022

The Community Service and Civic Engagement (CSCE) team at Northeastern invites community partners to register for the 2022 Fall Volunteer Fair on **Friday, September 16th in the Centennial Commons from 10:00 am - 2:00 pm**. The Fall Volunteer Fair provides a space for our community partner organizations to connect with the Northeastern community and our neighbors to recruit volunteers, share upcoming events or engagement opportunities, and develop new partnerships.

We have space for 70 organizations, so we encourage you to register today to reserve a spot!

[Register here!](#)



N Northeastern University

Come to Northeastern University's Fall Volunteer Fair!



**Friday, September 16th
10:00am- 2:00pm
Centennial Common**

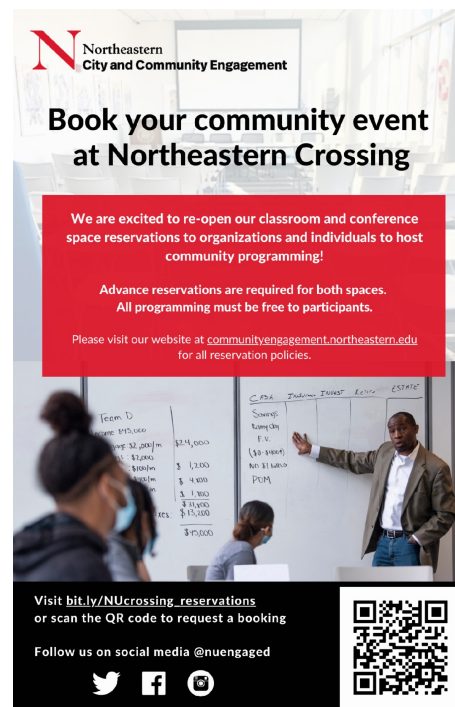
If your organization would like to table, please email Nancy Figueroa at n.figueroa@northeastern.edu

Book Northeastern Crossing for your next community event!

City and Community Engagement invites our local residents and organizations to reserve Northeastern Crossing for your next community event! Located at 1175 Tremont St., our FREE space offers both conference and classroom space options for your event and program needs.

*Advance reservations are required for both spaces.
All programming must be free to participants.*

[Request a booking!](#)



N Northeastern City and Community Engagement

Book your community event at Northeastern Crossing


We are excited to re-open our classroom and conference space reservations to organizations and individuals to host community programming!

Advance reservations are required for both spaces.
All programming must be free to participants.

Please visit our website at communityengagement.northeastern.edu for all reservation policies.

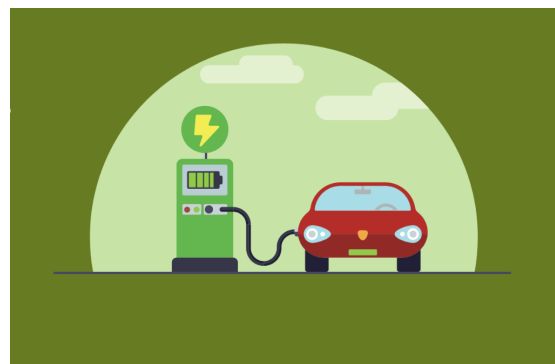
Visit bit.ly/NUcrossing_reservations or scan the QR code to request a booking

Follow us on social media @nuengaged



Need a lift? EV Car sharing now available on our Boston campus!

Good2Go – Electric Vehicle Carsharing has arrived at Northeastern University's Columbus Garage. Try out a brand new Electric Vehicle sharing program with a focus on equity with a strong belief that everyone has the right to clean and reliable transportation. [Learn more!](#)



NORTHEASTERN IS TOP DESTINATION FOR BOSTON PUBLIC SCHOOLS' VALEDICTORIANS

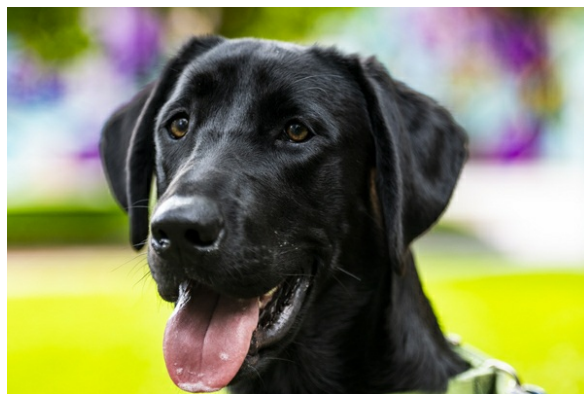
"Eleven of the 41 Boston public schools valedictorians have chosen to attend Northeastern University in the fall. The number of Boston valedictorians selecting Northeastern is nearly three times as many as any other college in the Boston area." [Read full article](#)



MEET SARGE, NORTHEASTERN'S NEWEST COMMUNITY DOG

"He's got a tail he loves to wag, floppy ears, a shiny black coat and a long, pink tongue that hangs out the side of his mouth.

But Sarge's best feature might just be his nose. It's what leads him—and, by extension, his handler, Northeastern University Police Department Sgt. Joe Corbett—through Northeastern's Boston location on one of their daily walks." [Read full article](#)



NO 'SUMMER MELT,' ONLY DAYS FILLED WITH READING AND FUN FOR KIDS IN DYNAMIC NORTHEASTERN PROGRAM

"The children, all students entering grades 2-6, are attending a four-week summer reading program on Northeastern's Boston campus this July. The program, called [Word Detectives](#), helps students who are reading below grade level to maintain their skills over the summer and boost their confidence going into the next school year." [Read full article](#)



PROFESSOR DEVELOPS 'EMERALD TUTU' OF FLOATING WETLANDS TO PROTECT BOSTON FROM FLOODS

"People have heard of Boston's famed 'Emerald Necklace' with its network of parks and green spaces. Northeastern University assistant professor Julia Hopkins hopes that Boston soon will be known for the "Emerald Tutu," a system of interconnected circular mats of floating

vegetation that can be arranged in rings and semicircles to protect urban coasts from sea level rise and intensified storms."

[Read full article](#)



FROM LGBTQ LIBERTIES TO POLICE REFORM, JUDGE RODERICK IRELAND HAS SEEN IT ALL

"Ireland, who is a distinguished professor of criminology and criminal justice at Northeastern, began his legal career in 1969 as a neighborhood legal services attorney. In 1971, he and Wallace Sherwood, an attorney who also taught in Northeastern's School of Criminology and Criminal Justice, founded the Roxbury Defenders Committee, a free public defender program. Prior to its creation, there was no public defender's office in Roxbury." [Read full article](#)



GET INVOLVED IN YOUR LOCAL COMMUNITY

[Celebrate the 25th Anniversary of Mission Hill Main Streets](#)

[Savor the Square in Roxbury](#)

[Swings for Unity for South End Soccer](#)

[Fenway Cares Weekly Food Distribution](#)

[2022 Mission Hill Road Race](#)

Want to learn more? There are a number of ways to stay engaged with Northeastern and our communities.

[Search or Submit Opportunities to the Service Finder!](#)

Follow us on social media!

[Sign up for the Weekly Volunteer Digest!](#)

